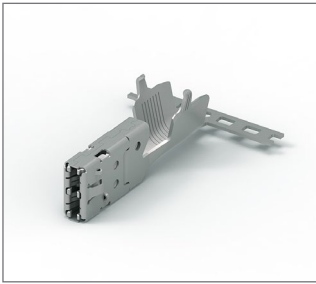


Receptacle Contacts



Technical Features

Wire Size Range:

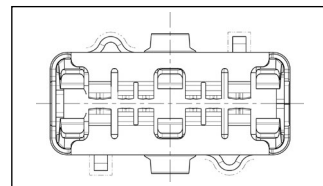
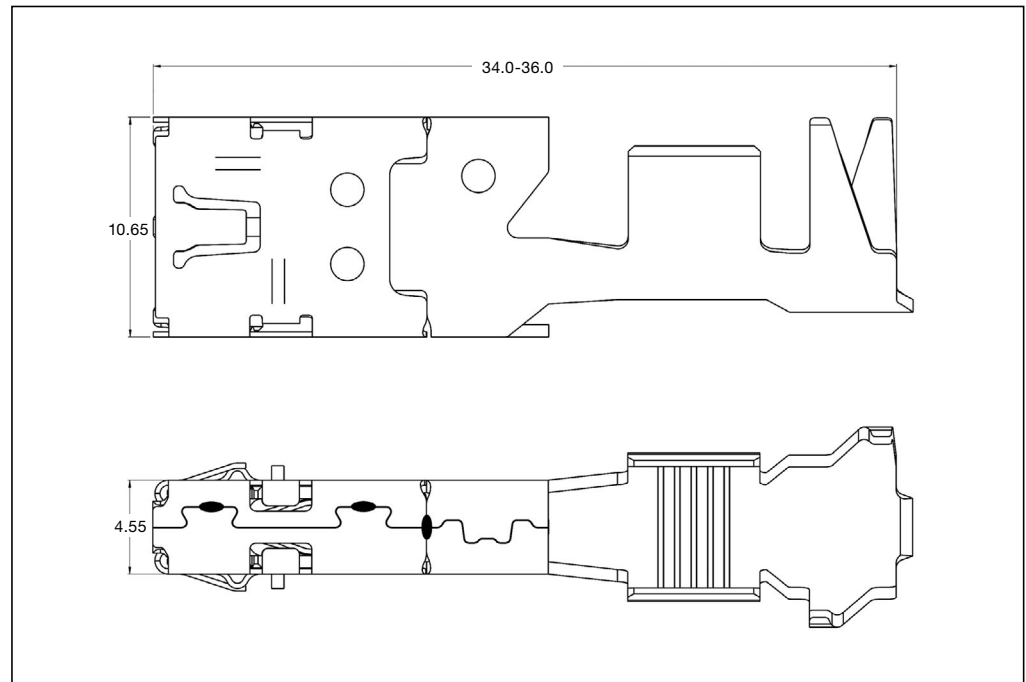
>2.5 – 16 mm²

Current Carrying Capacity:

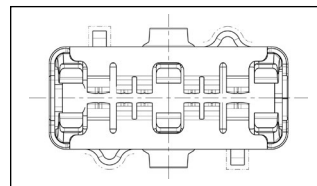
up to 90 Ampere
(@ 80 °C ambient temperature)

Total Temperature Range:

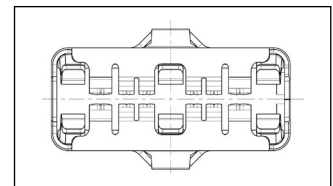
–40 °C ... +180 °C (silver plated)



Coding 1



Coding 2



Coding 5

Extraction Tool*:
2-1579028-2

Product Drawing:
2208761

Product Specification:
108-94421

Application Specification:
114-94285

* The option which extraction tool is the right tool for the application is dependent on the assembly of the contact and the connector.

Standard Receptacle Contact (SRC)

Wire Size Range (mm ²)	Insulation Diameter (mm) FLR	Coding ●)	Part Number	Material and Finish *)	Applicator ◆)	Hand Tool	Die Set
>2.5 – 4.0	2.7 – 3.7	1- / 2- / 5-	2208762	-3	x-2266457-x		
6.0 – 10.0	4.0 – 6.5	1- / 2- / 5-	2208763	-3	x-2266456-x	2-1579028-2	On request ◇)
16	8.3 max.	1- / 2- / 5-	2208764	-3	x-2276053-x		

Receptacle Contact with Single Wire Seal (SWS) System

Wire Size Range (mm ²)	Insulation Diameter (mm) FLR	Coding ●)	Part Number	Material and Finish *)	Applicator ◆)	Hand Tool	Die Set
>2.5 – 4.0	2.7 – 3.7	1- / 2-	2208765	-3	x-2266455-x		
6.0 – 10.0	4.0 – 6.5	1- / 2-	2208766	-3	x-2266457-x	2-1579028-2	On request ◇)

●) **Coding:**
1-xxx = Coding 1
2-xxx = Coding 2
5-xxx = Coding 5

*) **Material and Finish:** xxx-3 = CuNiSi, selective silver plated

Note: All part numbers are RoHS and ELV compliant

◆) The pre- and suffix for the applicators depends on the applied termination equipment

◇) In case of Tooling query please contact your local TE Connectivity representative